



Sustainment Management System (SMS)

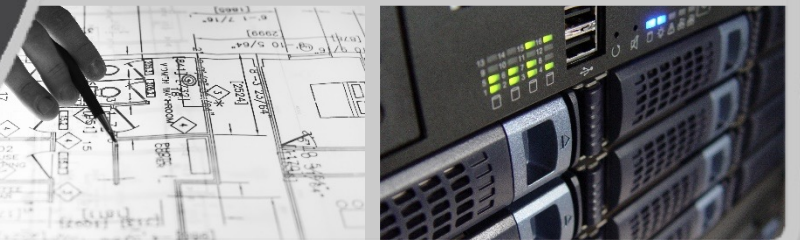
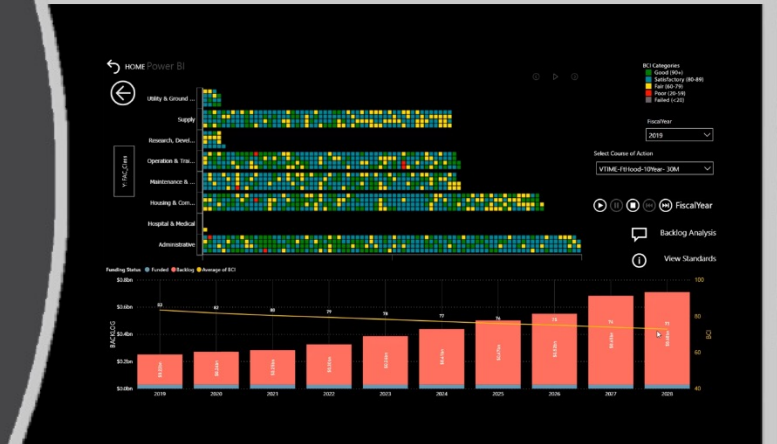
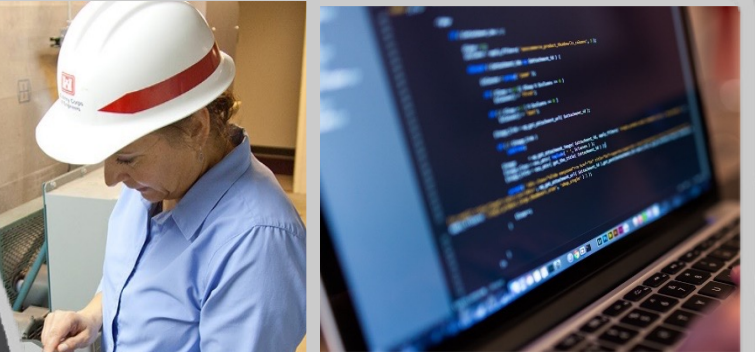
SMS-TCX and ESMS Updates

Prepared by Matthew Walters
Chief, SMS-TCX
USACE-ERDC, Construction Engineering Research Lab

25 JAN 2023



US Army Corps
of Engineers®



DISCOVER | DEVELOP | DELIVER



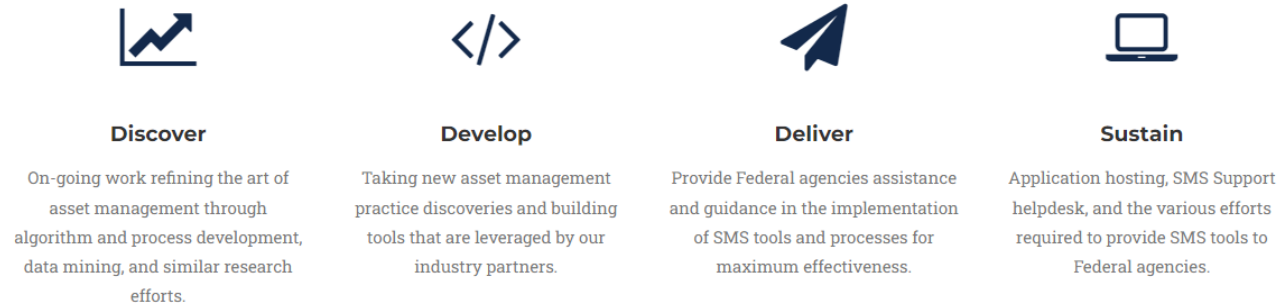
Sustainment Management System Technical Center of Expertise (SMS-TCX)



SMS PROCESS IN VISUAL FORM



SMS LIFECYCLE



Functional Teams

SMS TCX

Engineering

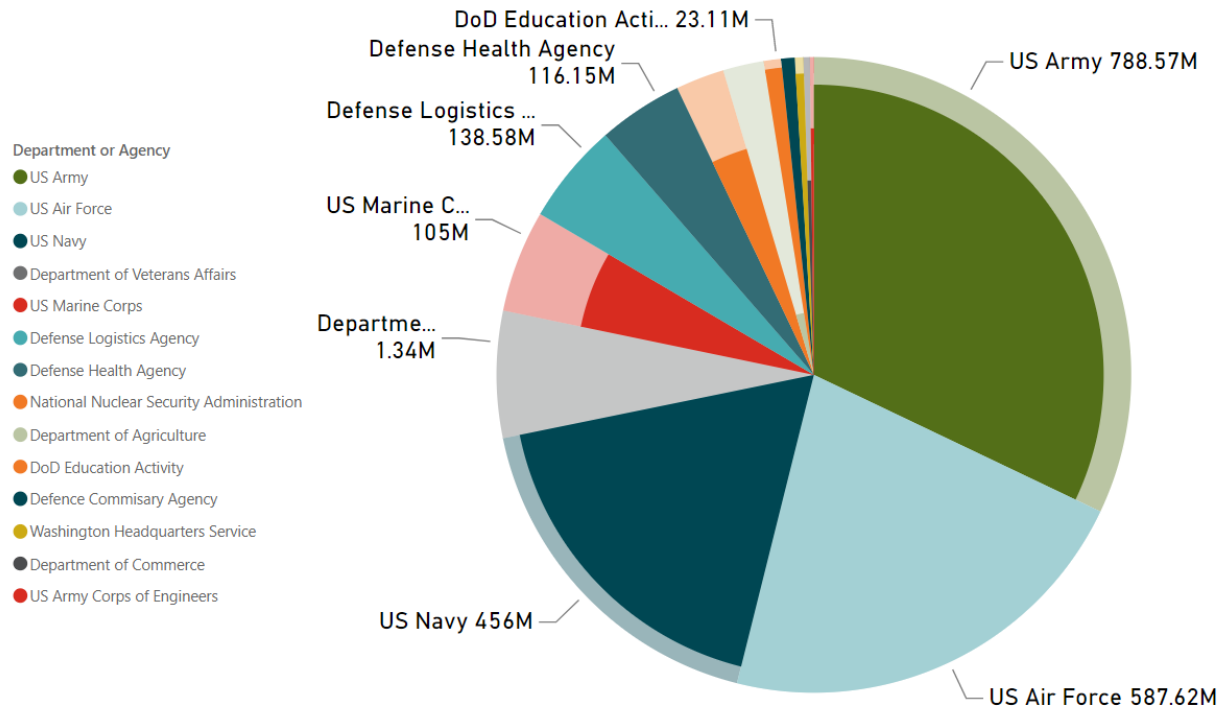
Development

Operations



DISCOVER | DEVELOP | DELIVER

SMS Implementation



* Quantities are agency *building* portfolio size in square footage, filled portion indicates current progress.

** Not shown - ODNI



**1.9B SF (Buildings)
Currently Assessed**

**Total of 2.1B SF Planned
Currently More Than 2x
All Office Space in
Manhattan**

**212,631 Buildings
9,308,557 Components
20,445,083 Assessments
5,423,146 Images**

SMS Team Updates

- Formalization of the SMS Technical Center of Expertise (TCX) within CERL
- SMS-TCX set up as an individual branch as part of a CERL reorganization
- 35 federal team members (engineering, computer scientists, IT Management, and technicians)
- Formal supervisory team leads for Development (Paul “Paisley” Mahern) and Operations (Arthur White)
- Progress in development of support materials (Updated SMS Website, Learning Management System, and SMS Support site)
- The more we improve, the more we see areas we need to continue improving!

BUILDER Development Since February 2020

Releases:

- 3.5.5 – April 27th, 2020
- 3.6.0 – September 10th, 2020
- 3.6.1 – March 11th, 2021
- 3.6.2 – September 21st, 2021
- 3.6.3 – October 18th, 2021
- 3.6.4 – February 23, 2022
- 3.6.5 – April 27th, 2022
- 3.6.6 – September 7th, 2022
- 3.6.7 – *Planned February 24th, 2023*

ATO:

Full ATO obtained in early 2021.

Full Release Notes: <https://support.sms.erdcdren.mil/news/release-notes>



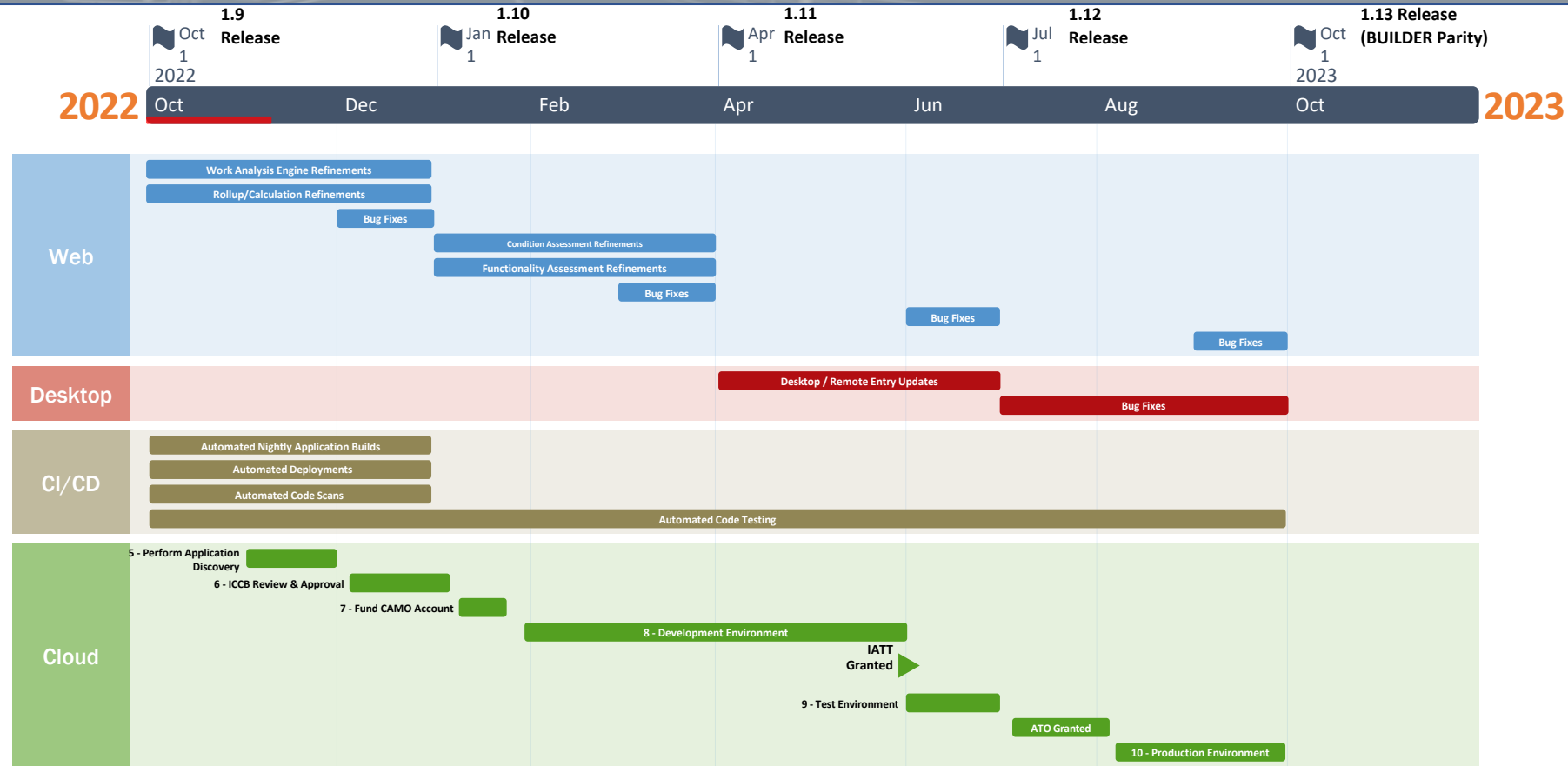
ENTERPRISE SUSTAINMENT MANAGEMENT SYSTEM (ESMS)

Enterprise Sustainment Management System (ESMS)

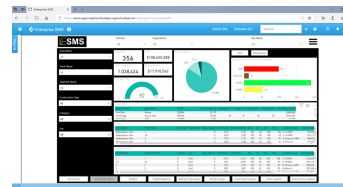
- Consolidated platform for facility assessment, performance modeling, investment, and forecasting information for all real property domains
- Aggregates key performance metrics and work needs across entire asset portfolio
- Comprehensive view of mission readiness and operational risks
- Eliminates “stove-piped” legacy systems and information silos

Tech Specs

- **WEB:** Modern Web Application
 - ASP.NET Core 5.0
 - Angular 6
 - Entity Framework Core 5.0
- **DATABASE:** Azure SQL Database
- **FIELD:** Windows Desktop/Tablet Application for Field Input
- **HOSTING:** Cloud-native architecture deployed on Azure Government Infrastructure
- **ACCESS:** Azure Active Directory Integration – Federated DoD Account Access
- **INTEGRATION:** API – Centric Design



2020 Release I: Descriptive Analysis Fuels/Utilities IOC



2023 Release II: Predictive Analysis SMS BUILDER Parity



2025 Release III: Prescriptive Analysis Optimization



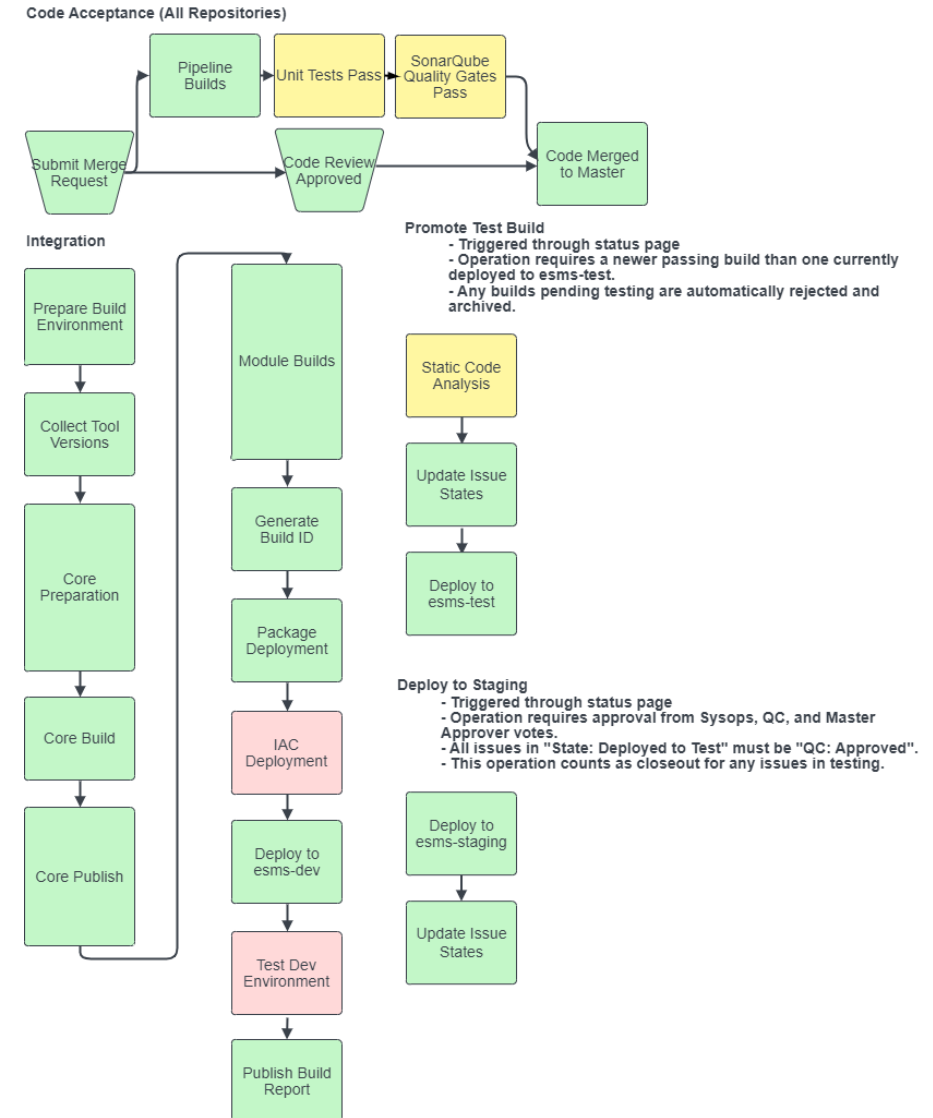
ESMS Infrastructure Highlights

Environment:

- cArmy Azure for all DoD
- Solution TBD for non-DoD Federal
- Private Licensing Gameplan TBD – In discussions with USACE/ERDC Technical Transfer Office
- Targeted ATO by end of FY23

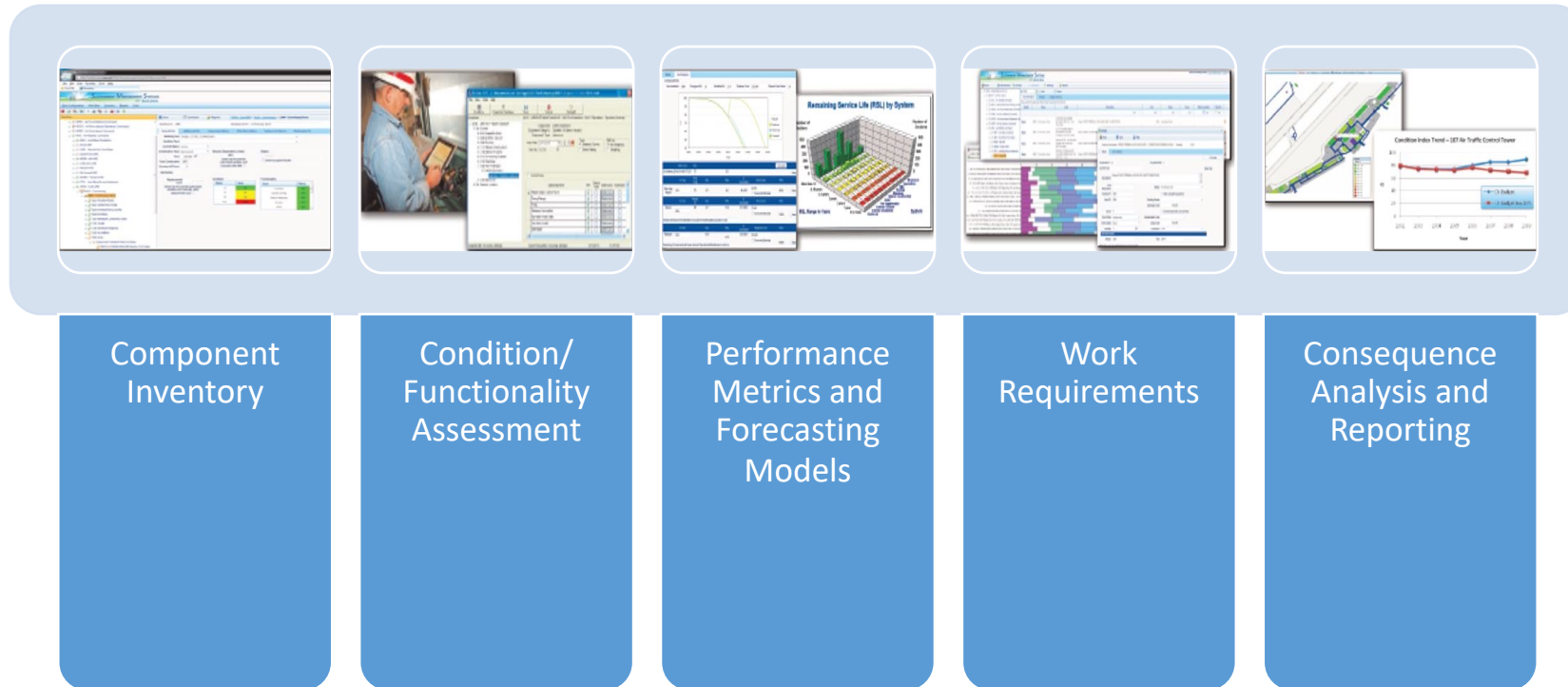
Development/Deployment:

- Continuous Integration / Continuous Delivery (CI/CD) model
- Integrated automated testing, security, and code quality scans
- Manual feature/bug testing in the deployment pipeline
- Code is released to production as it is ready, not waiting on a quarterly release



SMS Process Refresher

A structured process for collecting, synthesizing, and organizing **information** about civil infrastructure and facility assets to support decisions pertaining to their **sustainment** over their lifecycle



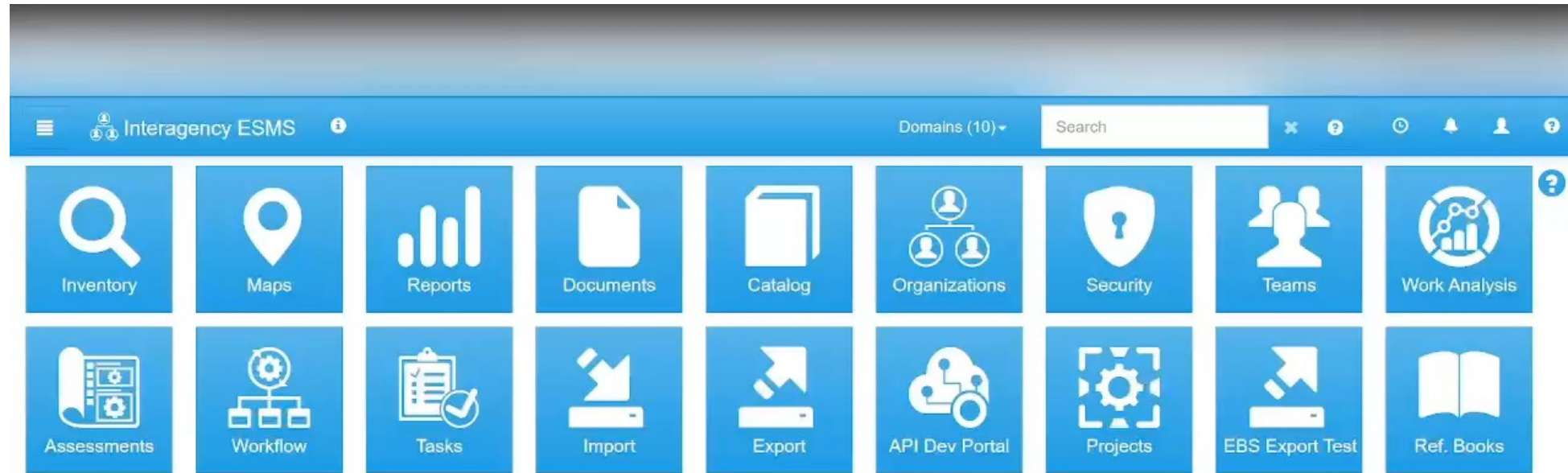
Core ESMS Features at 2023 “BUILDER Parity” Milestone

Feature	Description
Organizations	Multi-organizational management within ESMS.
Security/Teams	User Management, Custom User Role Creation/Management, Permissions Assignment, and Team development and permission assignment.
User Preferences	User contact information, default application loading settings, Desktop Sync Settings, view Organizational and Team memberships, and Permission/Role assignments.
Catalog Management	In-app administrative capability of creating new component definitions, associated attributes, assessment templates, and more.
Notifications	Check in on progress of background running processes, Workflow updates, and application updates since last login.
Reports	PowerBI integration within ESMS to create dashboard visualizations as well as paginated reports (BUILDER Custom Reports style).
GIS Map View	Visualize and navigate Facilities/Components using GIS map view where GIS data is available/imported in ESMS.
Documents	Photos, documents, maps, etc. can be uploaded and tagged to Facilities, Components, Assessments.
Import	Import from GIS, BUILDER, RAILER, PAVER E70, and more.
Exports	Create and manage export configurations to serve up ESMS data for external systems.
API Dev Portal	API Definitions and sample code for developers working on Systems integration and third-party app.

Core ESMS Features at 2023 “BUILDER Parity” Milestone

	Inventory	Assessments**	Predict	Work Planning	Forecasting
Fuels	✓	✓		✓	
Utilities	✓*	✓*	✓	✓	✓
Buildings	✓	✓	✓	✓	✓
Rails	✓*	✓*		✓	
Water Control	✓	✓			
Waterfront	✓	✓			
Pavements	✓*	✓*			

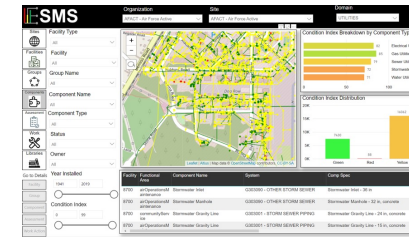
ESMS Demo Video



Where We're Going

- BUILDER Feature Parity in ESMS and ATO – End FY23
- Full Engineering Data Model build-out for newest SMS domains
- Facility Sustainment Model with SMS
- Facility Investment Optimization (Wave III)
- Collaboration with CERL Energy Branch and other DoD/Federal Partners on ESMS and Facility Related Control Systems (FRCS)
- Multi-Service collaboration on CMMS integration with ESMS

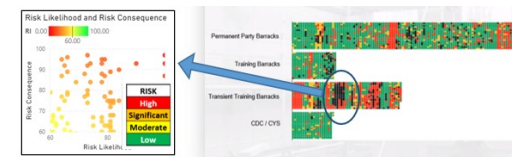
ESMS



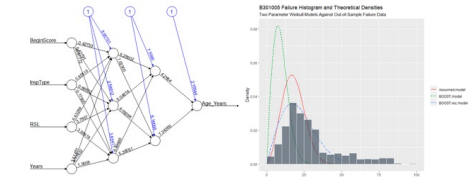
New Modules



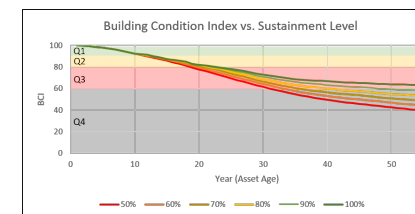
Risk Prioritization



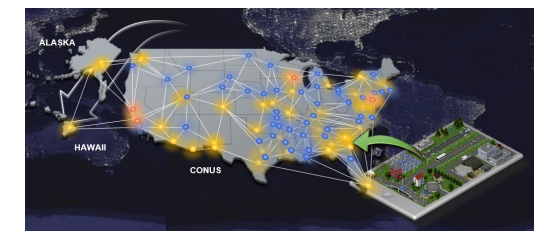
Data Analytics



Sustainment Modeling



Integration



Questions?