



Welcome to the



**BUILDER
SUMMIT**

August 14-15TH, 2019 | Keck Center – Washington DC

REMOTE ATTENDEES
 "B" Sessions: Keck - E Street Conference Room
 WebEx: <https://usace.webex.com/join/michael.n.grussing>
 Security Code: 0814#




1



**System Integration
Workshop**

BUILDER API Workshop
 Presented by Kurt Sorensen, DIGON Systems

REMOTE ATTENDEES
 "B" Sessions: Keck - E Street Conference Room
 WebEx: <https://usace.webex.com/join/michael.n.grussing>
 Security Code: 0814#




2



Introductions / Experience

- Kurt Sorensen
President, DIGON Systems
BUILDER CRADA /
Distribution Partner
- USDA-ARS
 - ✓ DudeSolutions Import File
- Archibus
 - ✓ Database Integration Support
- NNSA
 - ✓ Maximo, AssetSuite, Gov Applications
API Integration
 - ✓ RS Means
- Air National Guard
 - ✓ iEMS API Integration

3

3

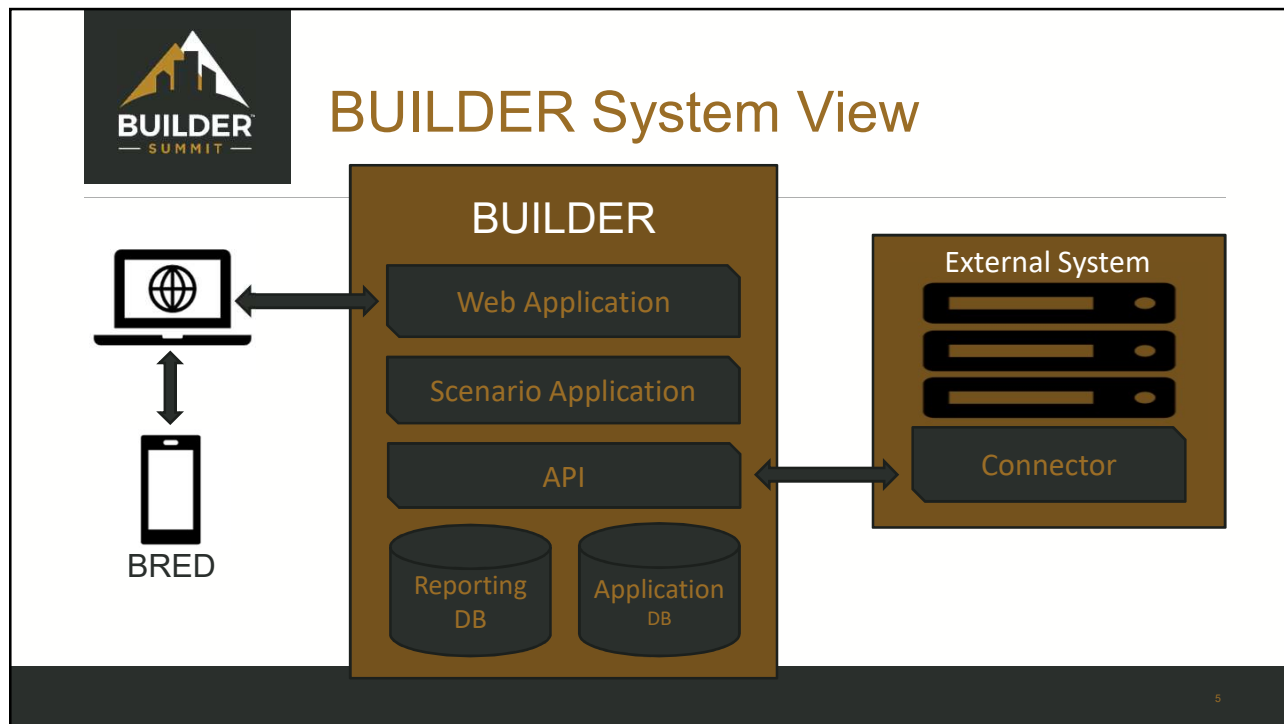


Breakout Session Goals

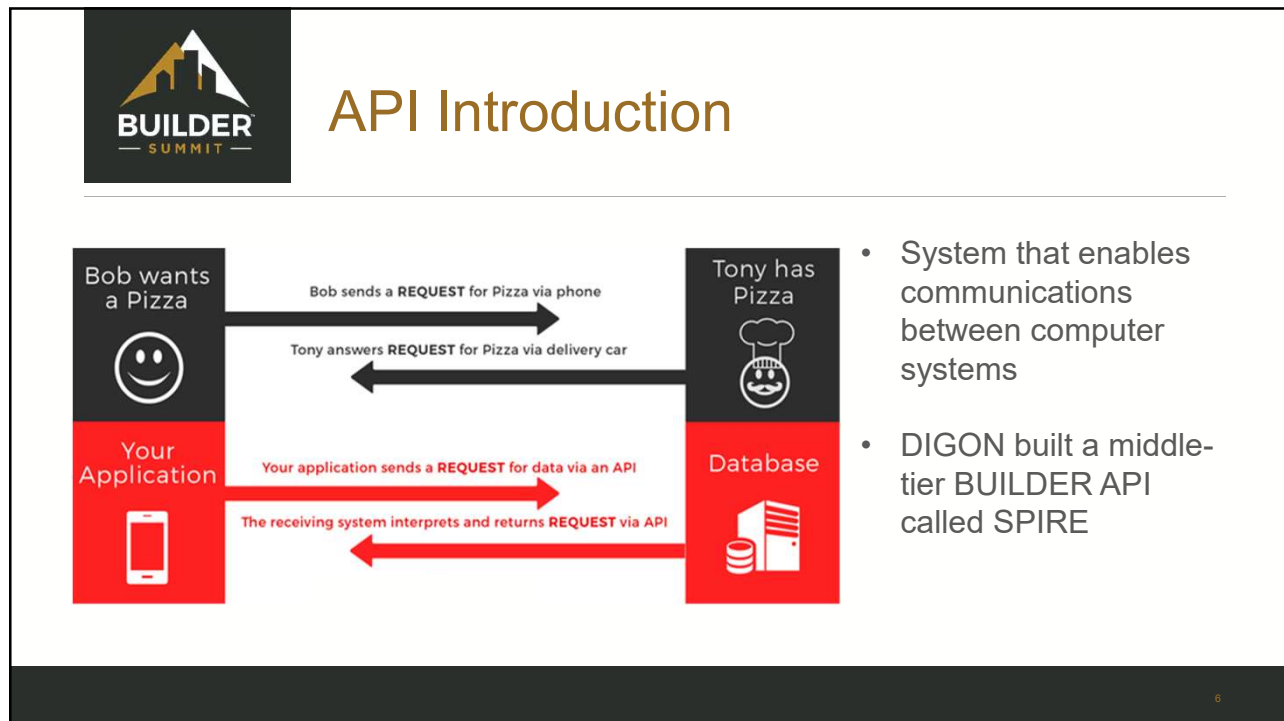
- Introduce Application Programming Interface (API)
- Outline BUILDER API Capabilities / Limitations
- Discuss Application Technology Trends
- API Tool Exercise
- Lessons Learned / Q&A

4

4



5



6



Existing Documentation



Adobe Acrobat
Document

- CERL has documentation that is targeted to a software developer audience



Microsoft Excel
Worksheet

- DIGON has documented the commonly used API data elements for our SPIRE integration tool

7

7



Current Capabilities

- Buildings
- Inventory (Systems, Components, Sections)
- Inspections
- Work Items*
- Scenarios
- User Management

8

8



Limitations

Excluded Capabilities

- Reports
- BRED Tools
- Work Configuration
- Functionality Assessments

New Features

- Catalog Management
- Photos

9

9



Inventory - Known Issues

- The API will not accept any catalog changes while the BUILDER web interface will allow a L4/5 update
Example: 5hp pump to a 10hp pump
- Remember that you must create any missing Systems and Components before adding sections to that area of UNIFORMAT

10

10



Inspection - Known Issues

- The API requires a CI number and not a direct rating color
- Recent bug deletes inspections if viewed in the interface (planned hotfix)
- API can update past inspections without the date limit enforced through the UI

11

11

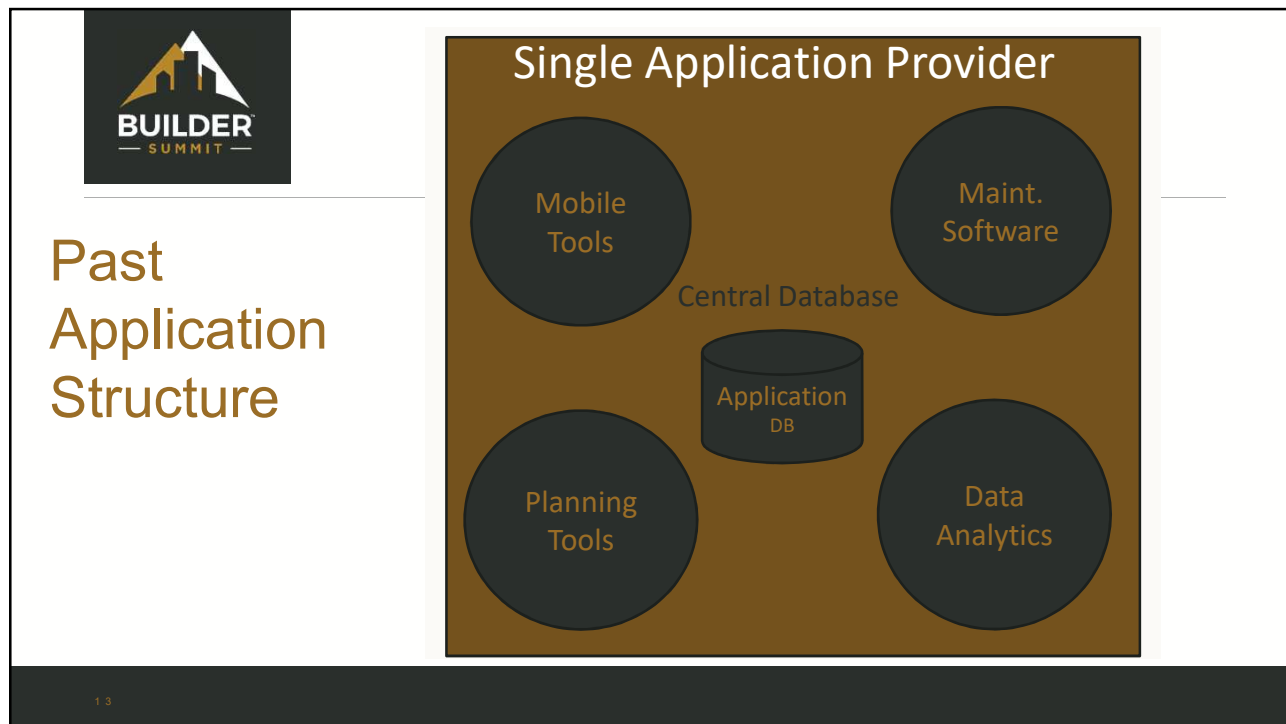


Work Management - Known Issues

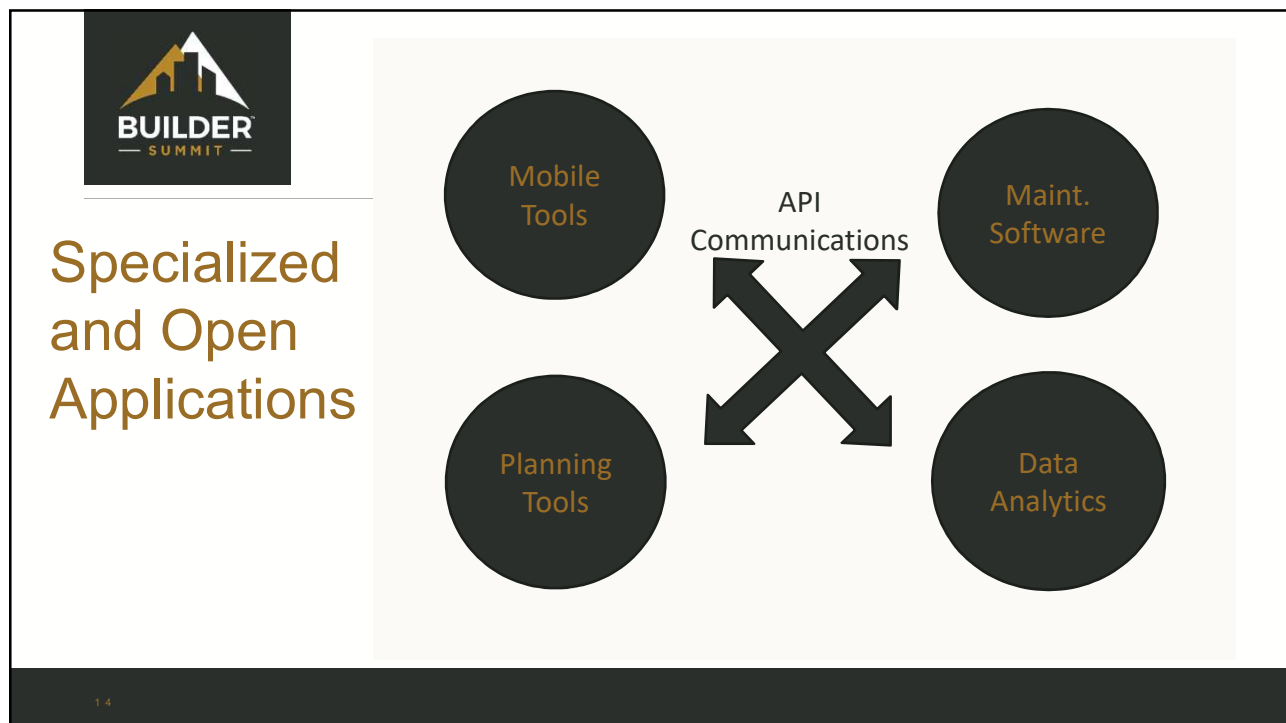
- Cannot generate work plan items through the API
- Setting a work item status to complete does not yet perform all the required inventory updates

12

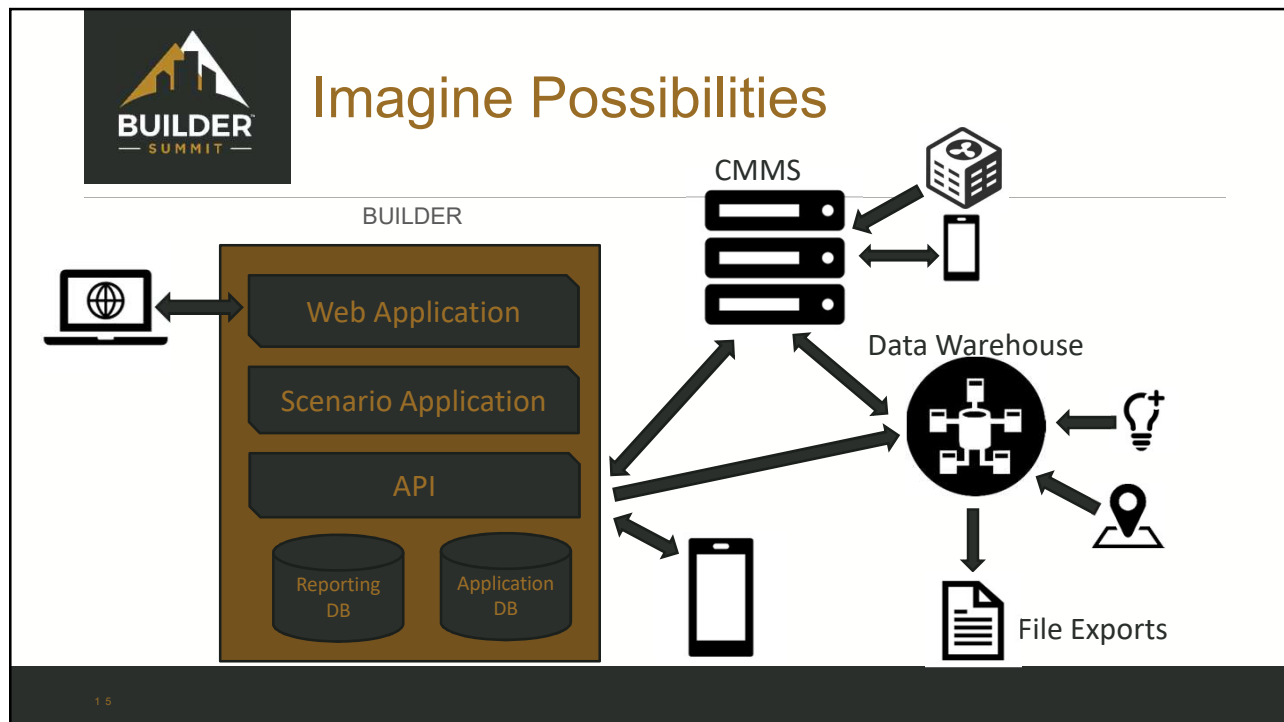
12



13



14



15

BUILDER

Web Application

Scenario Application

API

Reporting DB

Application DB

CMMS

Data Warehouse

File Exports

eSMS BUILDER Development

Enterprise SMS (eSMS) is under development and targeting BUILDER capabilities in the next few years

- Current BUILDER is a SOAP based API
- Enterprise SMS is REST based API

16

16



Demonstration / Working Session

- <https://buildersummit.com/resources/>
- API Connector Tool
 - Unzip to Desktop
 - Change Server URL
 - Change User Email / Password
- API Connector Source Available to Download
- Connect to a Server
- Sample Playground
 URL: <https://demo.buildersoftware.net>
 User: info@digonsystems.com
 Password: Pass4API

17

17



Lessons Learned

- Section equipment grouping is not common in CMMS
- Understand the data ownership relationships
- Bring in Information Assurance / Cyber Security early
- Work items often are re-generated
- Test performance early with large datasets

18

18



 Thank You

Next Summit Summer @ San Antonio
February 12-14, 2020

Please send feedback and future discussions to:
kurt@digonsystems.com